

1

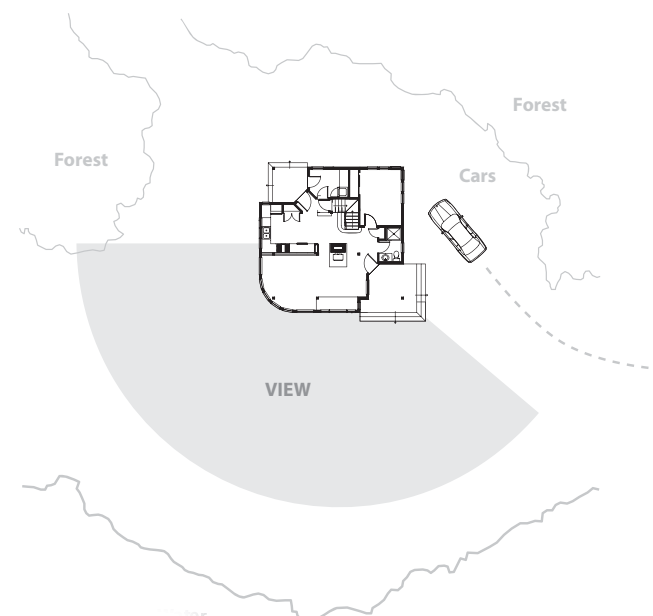
A Sunny Place in the Forest

Heated square feet..... 1,418
 Adjusted square feet..... 1,649
 2 - Bedrooms
 2 - Bathrooms
 Full basement foundation



Site Diagram

0 10 40 feet
 1"=40'



0 2 8 20 feet
 1"=20'

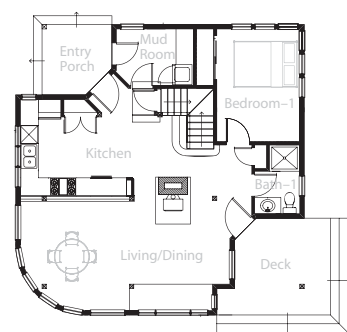


A very compact footprint, and a strong sense of geometry make this house a good candidate for tight sites. Views are oriented to the south and west, but you could mirror it for south and east.

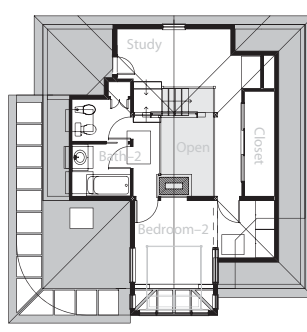
When I designed this house it was foremost in my mind to create a place that was wonderful to be in because it was small.

This house was featured in Sarah Susanka's book, *Creating the Not So Big House* (2000), in the Spring 1988 issue of *House Beautiful*, and the February 1986 issue of *Down East* magazine.

Our clients wanted the smallest footprint possible to minimize the impact on their beautiful land. It was a vacation home for their family of four, and was designed with the idea of enlarging it (which we later did) if they moved there year round.



1st floor
 0 2 8 20 feet
 1"=20'



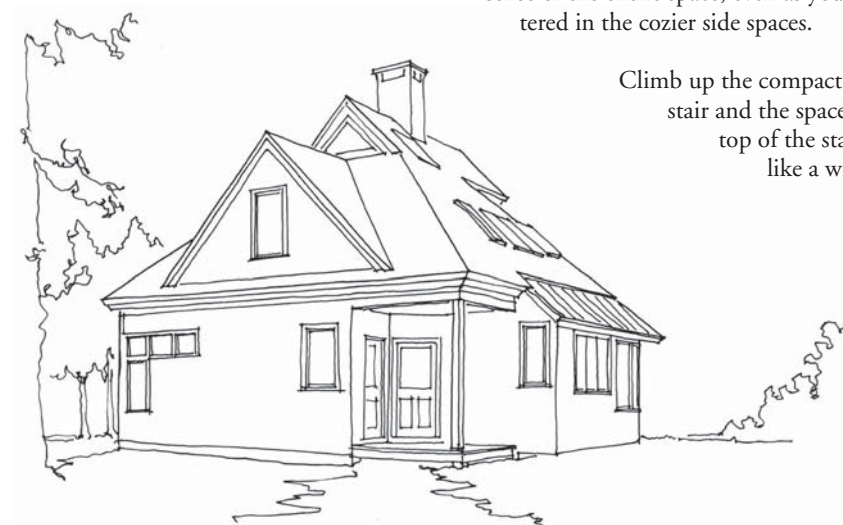
2nd floor

the stairs. In the dead of winter, the same front porch and the same entry hall inside will serve both entrances—no hallways!

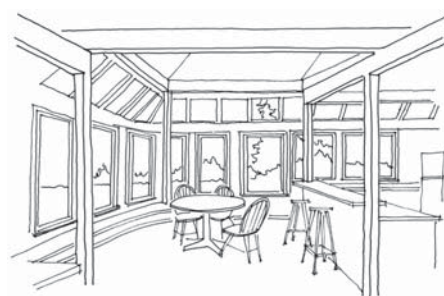
Once inside the building, all of the rooms radiate off the central space, which is open to the roof ridge so that you can always get a sense of the entire space, even as you are sheltered in the cozier side spaces.

Climb up the compact corner stair and the space at the top of the stairs is like a wide hall-

way that we developed into an office/study. Walk from there along the balcony that goes past the bathroom (or the closet space) and you end up at the bedroom. This destination effect makes the bedroom feel like a very separate and private place because of the spatial transition to get to it. Once inside the bedroom, the bay window lets all the space fly out into the view so that you can almost forget that the house is behind you.



It's a wonderful place to hunker down near the woodstove (which could become a fireplace) and wait out the winter, and in the summer all the glass makes it like living outside.



Since we were only cutting a small hole in the forest canopy, I took this compact footprint, and gave it a strong vertical component and a lot of roof glazing so the house could reach up toward the light, like the spruce trees around it. This assured that what sunlight fell down into this "hole in the forest" would get into the house.

do well with any site where the approach is from a different direction than the primary view. The house can easily be mirrored to deal with a westerly as opposed to an easterly view orientation.

It is desirable in a small house that circulation space has multiple uses, so we have both a front door and an airlock mudroom entry off the front porch. This mudroom holds a freezer and washer and dryer tucked under

On this site the house looks out to a quiet cove to the southeast, but this house would

Dimensions

Foot Print	1,085 sq. ft.		
View Dimension	36'		
Side Dimension	33'		
Height	26'-6"		
Summary		1st Floor	2nd Floor
	1st Floor 900 sq. ft.	Living	24' x 12'-6"
	2nd Floor 518 sq. ft.	Kitchen	11' x 13'
		Bedroom-1	10' x 13'
		Bath-1	5' x 8'-6"
		Mud Room	9' x 9'-6"
		Bedroom-2	9' x 12'-6"
		Bath-2	6'-6" x 11'
		Study	13'-6" x 7'

Working Drawings

- Fndtn. Plan, 1st flr. Framing
- 1st & 2nd flr. Plan, Schedules
- 2nd flr./Roof Framing
- Curved wall Framing Plan
- Section "A" and Details
- Section "B" and Details
- Section "C" and Details
- Elevations
- Electrical Plans

Working drawings provide you with the architectural documentation you (or your builder) need to build this house. Working drawing sets vary for each of the houses. The set for this house is listed at the left. Please see page 47 for information on ordering and prices.